

Drawing



Tools for Chefs

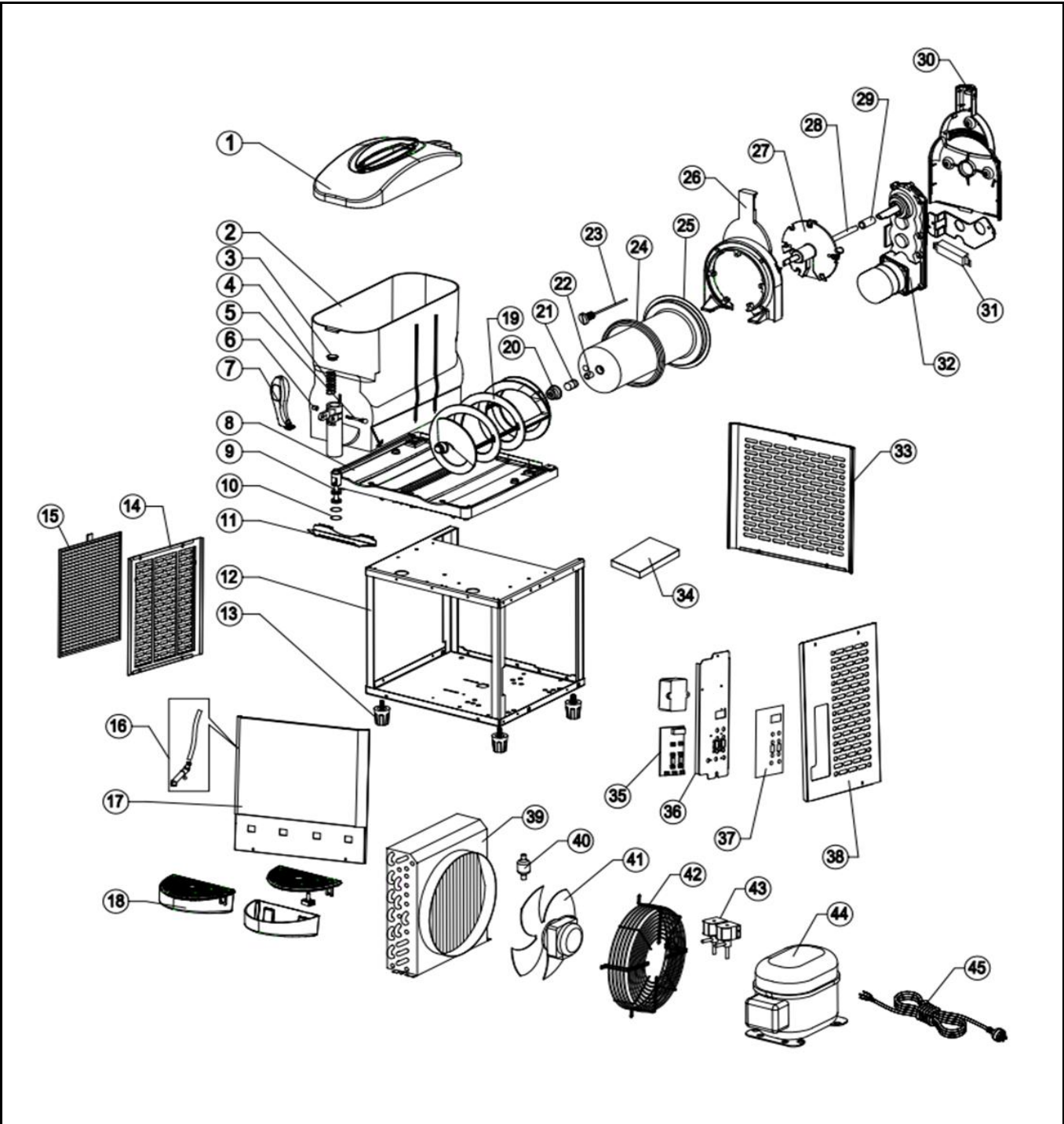
Hendi B.V.
 Innovatielaan 6
 6745XW De Klomp
 The Netherlands

Batch #
 000000 and up


Appliance part#
274361

Description
 Slush machine 2X12L

Date	05-05-2026	Revision #	V.01
Revision	First Bill of Materials (BOM)		



Bill of materials (BOM)

 <b style="font-size: 24px; margin-left: 10px;">HENDI Tools for Chefs Hendi B.V. Steenoven 21 3911 TX Rhenen The Netherlands	Batch #	Appliance part#
	000000 and up	274361
	Description	
	Slush machine 2X12L	


Date	05-05-2026	Revision #	V.01
Revision	First Bill of Materials (BOM)		

Item	Description	Part#	Quantity	Remark	Picture
1	Lid complete	946534	2		
2	Bowl	946541	2		
3	Seal (faucet top)	973240	2		
4	Spring of tap	nss	2		
5	Lockpin	973257	2	Incl. item 6	
6	Nut of pin	nss	2		
7	Lever faucet	nss	2		
8	Housing panel (top)	n/a	1		
9	Lever faucet	nss	2		
10	Seal faucet	946985	2		
A	Faucet complete	946565	2	Incl. item 4, 5, 6, 7, 9 and 10	
11	Deflector	946589	2		
12	Frame	n/a	1		
13	Feet	946596	4	Set of 4pcs	
14	Housing panel (left)	n/a	1		
15	Condenser filter	973301	1		
16	Drain tube	946602	2		
17	Housing panel (front	n/a	1		
18	Drip tray	946619	2		
19	Auger	946626	2		
20	Seal auger	946633	2		
21	Seal of axis	946640	2		
22	Washer	n/a	2		
23	Sensor	946688	2		
24	Silicone seal container/evaporator	946657	2		
25	Evaporator	n/a	1		
26	Evaporator bracket	n/a	1		
27	Axle bracket	n/a	2		
28	Axle	n/a	2		
29	Axle connector	n/a	2		
30	Evaporator bracket cover	n/a	2		
31	E-driver module for motor	946992	2		
32	Brushless DC motor	946664	2		
33	Housing panel (back)	n/a	1		
34	Power supply	946671	1		
35	Control PCB	973318	1		
36	Control PCB bracket	n/a	1		
37	Control panel sticker	973325	1		
38	Housing panel (right)	n/a	1		
39	Condenser	n/a	1		
40	Dryer filter	n/a	1		
41	Condenser fan	957783	1		
42	Protective grid	n/a	1		
43	Solenoid valve	973295	1		
44	Compressor	n/a	1	KA160QMF	
45	Power cord	946749	1		

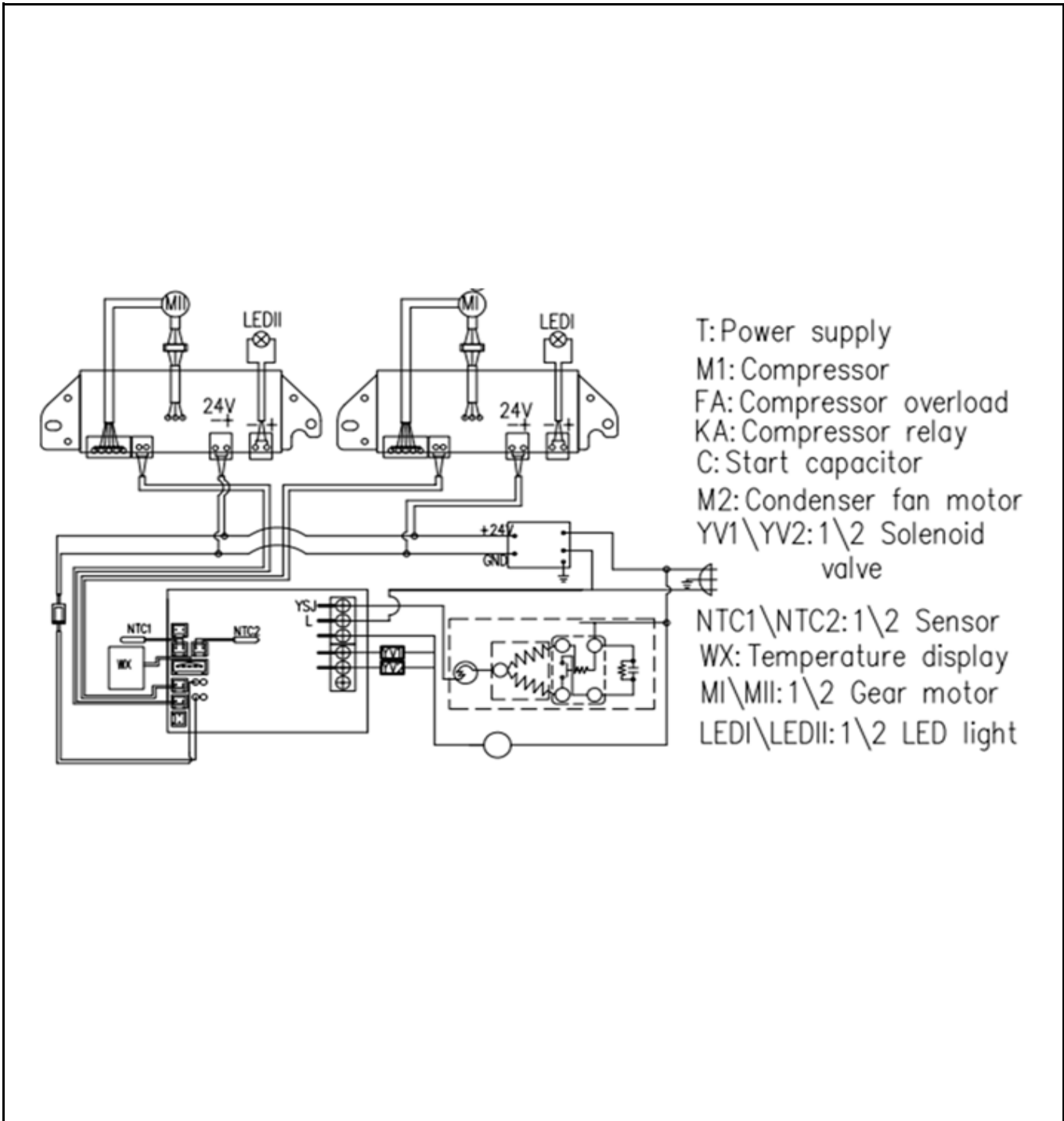
n/a -> not available

nss -> not sold separately

Circuit diagram

 <b style="font-size: 2em; margin-left: 10px;">HENDI Tools for Chefs Hendi B.V. Steenoven 21 3911 TX Rhenen The Netherlands	Batch #	Appliance part#
	000000 and up	274361
	Description	
	Slush machine 2X12L	

Date	05-05-2026	Revision #	V.01
Revision	First Bill of Materials (BOM)		



Dimentional drawing



HENDI

Tools for Chefs

Hendi B.V.

Steenoven 21
3911 TX Rhenen
The Netherlands

Batch #

000000 and up

Appliance part#

274361

Description

Slush machine 2X12L

Date

05-05-2026

Revision #

V.01

Revision

First Bill of Materials (BOM)

